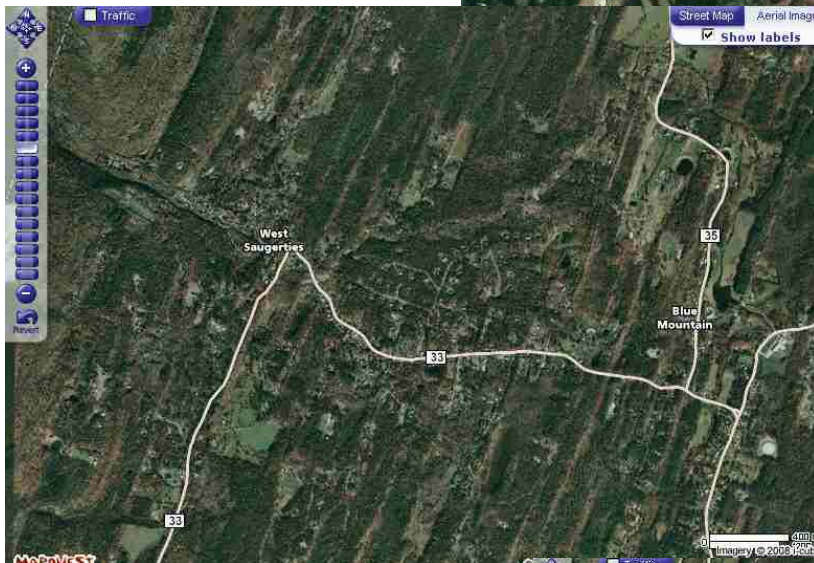


Lands of David and Carolyn Griffin  
Blue Mountain Rd.  
Saugerties, NY 12477

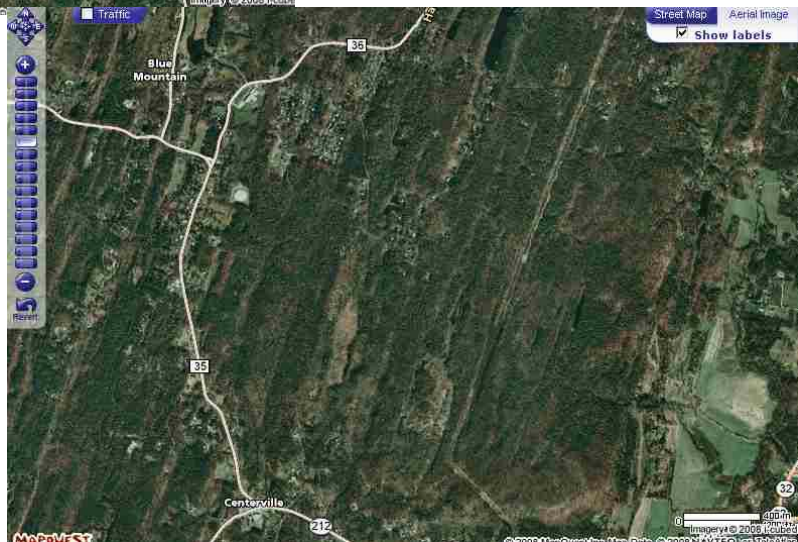
Property is 14.3 acres, about half woods and half pasture. Mountains rise abruptly less than 2 miles west.

At right, you can see the two fields just below the water tank, with Marion's horse farm below ours. Fields can be hayed or used to pasture horses.



At left, see the proximity of the mountains to the west.

At right, you can see the Winston Farm to the east and the large amount of woods and forest in the area. In fact, pasture land is at a premium in Saugerties, due to the prevalence of 2<sup>nd</sup> growth forest.



[www.windsweptpress.com](http://www.windsweptpress.com)